

# Timaru District by numbers

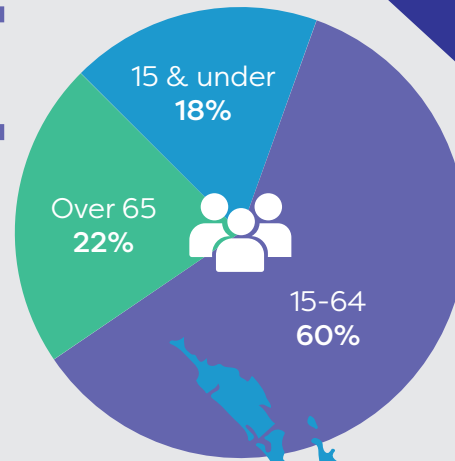
## Population 47,700

**Timaru District**  
22% over 65 years (as at Oct 2019)

**New Zealand**  
15% over 65 years (as at 2018 census)

Within 15 years, Timaru District is estimated to have 33% over 65 years

(Sourced from TDC Growth Management Strategy, May 2018)

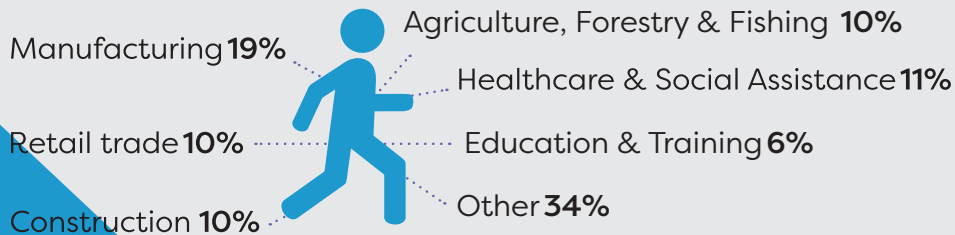


## Dairy Incomes



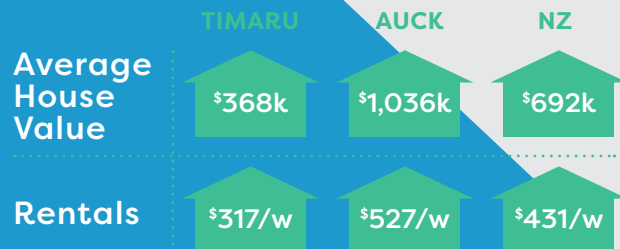
(Sourced from National Population Estimates, infoshare tables Oct 2019)

## Total jobs filled 25,500



Year ended 2018

## Housing

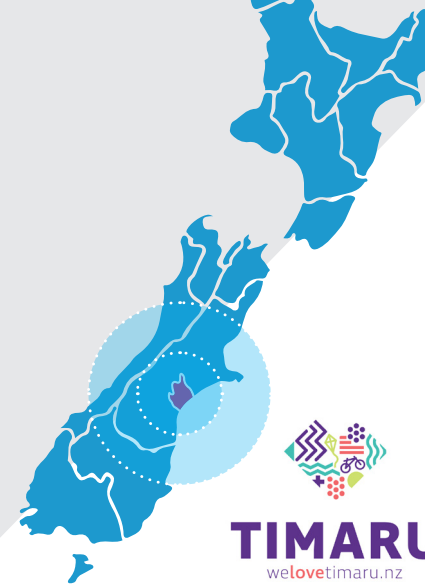


## Confirmed Local Election Turnout

Timaru District.....55%

New Zealand.....41.4%

(Sourced from LGNZ)



## GDP Growth

Timaru District 2%

New Zealand 2.4%

## Unemployment Rate

Timaru District 3.2%

New Zealand 4.2%

## Did you Know



City Harvest Food Rescue Canterbury has been operating for only 3 months in Timaru but already this organisation has been responsible for diverting **16 tonnes** of edible food (past its best by date) from the landfill. The food distributed to various organisations is equivalent to around **5,600 meals**.

Timaru District collects about **22,000 tonnes** of different waste streams per year. Of this material, it is estimated 60% is recycled.

(Sourced from Stuff Nov 2019)

## Household Affordability Ratio

Timaru District 5.5 times

Auckland 12.3 times

New Zealand 9.0 times

Ratio is median houseprice divided by median household income.